



GRIPS

Version: 2019.03

What's new?

2019.02 Build 06 – 2019.03 Build 07

Legal notice

Name:	What's new 2019.02 Build 06 - 2019.03 Build 07
Software:	GRIPS
Version:	2019.03
Target audience:	<ul style="list-style-type: none">• GRIPS Technical Writer• GRIPS Translation Manager• GRIPS Publication Manager• GRIPS Information Manager• System Administrator
Language:	English (ENU)
Published version:	16.09.2019 / 13:03:25

STAR AG

Wiesholz 35
8262 Ramsen
Switzerland

© Copyright by **STAR AG** 2019

All parts of this documentation are copyright protected and are for internal use only by our customers. They may not be communicated to third parties.

Any use beyond the boundaries of the copyright is not permitted without written permission from the author. This applies especially to the duplication, publication and translation of this documentation and parts thereof as well as to the storage and editing of the content using electronic data processing systems.

The content of this document was reviewed carefully. STAR AG is not liable for any consequences in connection with the use of this documentation. The brand names mentioned in this document are the property of the trademark holder.

Content

1	Change Descriptions	1
1.1	,GRIPS Matrix'	1
1.1.1	Design optimization and expansion of functions in 'IU context' dialog	1
1.1.2	Configurable comment notifications (request for feature)	5
1.1.3	More precise information on duration of data reference refreshing	7
1.2	,GRIPS Editor'	8
1.2.1	Replace data elements and inclusions using Cut and Paste	8
1.3	,GRIPS Manager'	10
1.3.1	Functionality to export configuration files for Acrolinx	10
2	Bug fixes and other adjustments	12
2.1	General adjustments	12
2.1.1	Support for PDF 2.0 standard	12
2.1.2	Improved use of ,GRIPS' windows and dialogs on multiple monitors	12
2.1.3	Optimized operation for extra-long publication types	12
2.2	,GRIPS Matrix'	13
2.2.1	Security improved during login	13
2.2.2	Behavior corrected in automation tasks	13
2.2.3	Return to data improved	13
2.2.4	Functioning of email templates improved in automation tasks	14
2.2.5	Message for saving/discarding rights assignments	15
2.2.6	Improved copying of IU lists	15
2.2.7	'Create new...' and 'Create and edit new...' also possible on IU anchors	16
2.2.8	New message for an inappropriate publication type	16
2.3	,GRIPS Editor'	18
2.3.1	Improved operation of search function for tables	18
2.3.2	Copying and pasting of ,GRIPS MindReader' suggestions optimized	18
2.3.3	Presentation of layout profile ,Images' improved	18
2.4	,GRIPS Viewer'	19
2.4.1	Support for very long URLs	19
2.4.2	Improved image presentation	19
2.5	,GRIPS Manager'	20
2.5.1	Improved display during project folder check	20
2.6	,JadeToGrips'	21
2.6.1	Online publication of multiple IU anchors	21

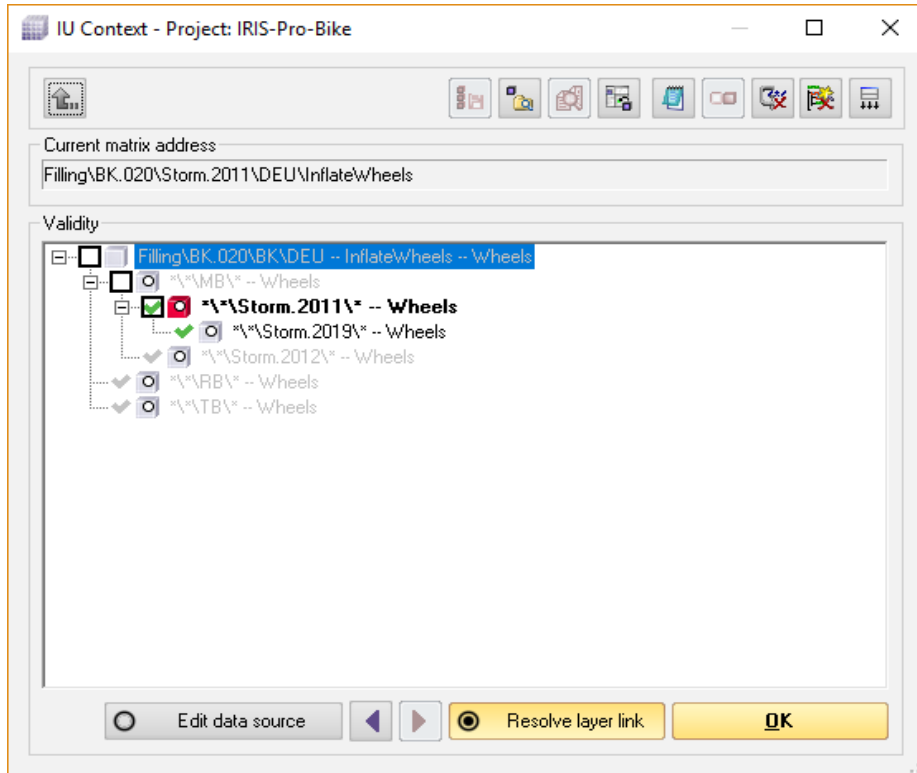


2.7	,GRIPS Document Editor'	22
2.7.1	Inclusions now also set in index entries	22
2.7.2	Interface simplified	22
	Index	23

1 Change Descriptions

1.1 ,GRIPS Matrix‘

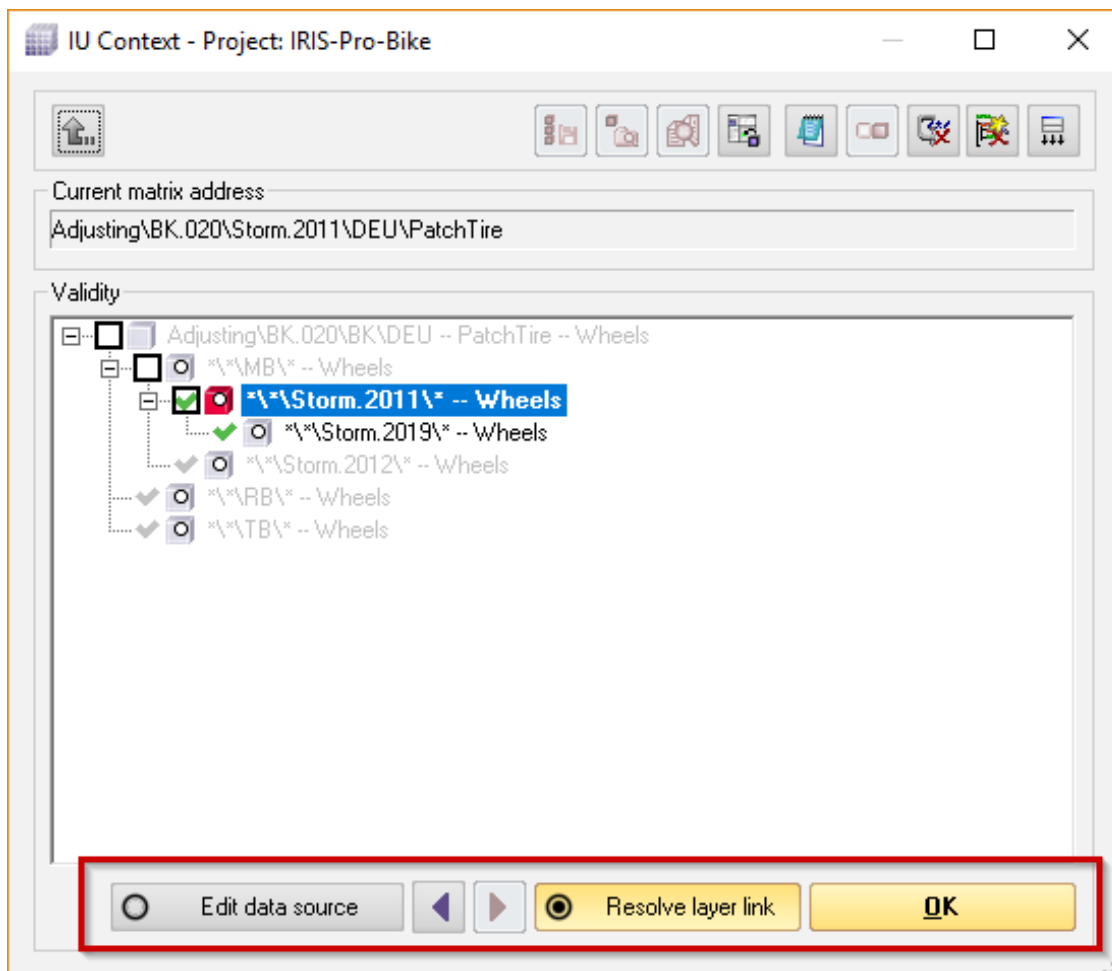
1.1.1 Design optimization and expansion of functions in 'IU context' dialog



Overview of 'IU context' dialog

The '**IU context**' dialog provides an overview of how an information unit is projected through layer links. Besides the overview, if a projected IU is opened for writing, the dialog makes it possible to select if the layer link should be resolved at the currently selected matrix address or if the data source should be edited. The dialog has been improved and optimized in two ways.

Select any projection level in a layer link sequence for resolving



Navigation through a layer link sequence

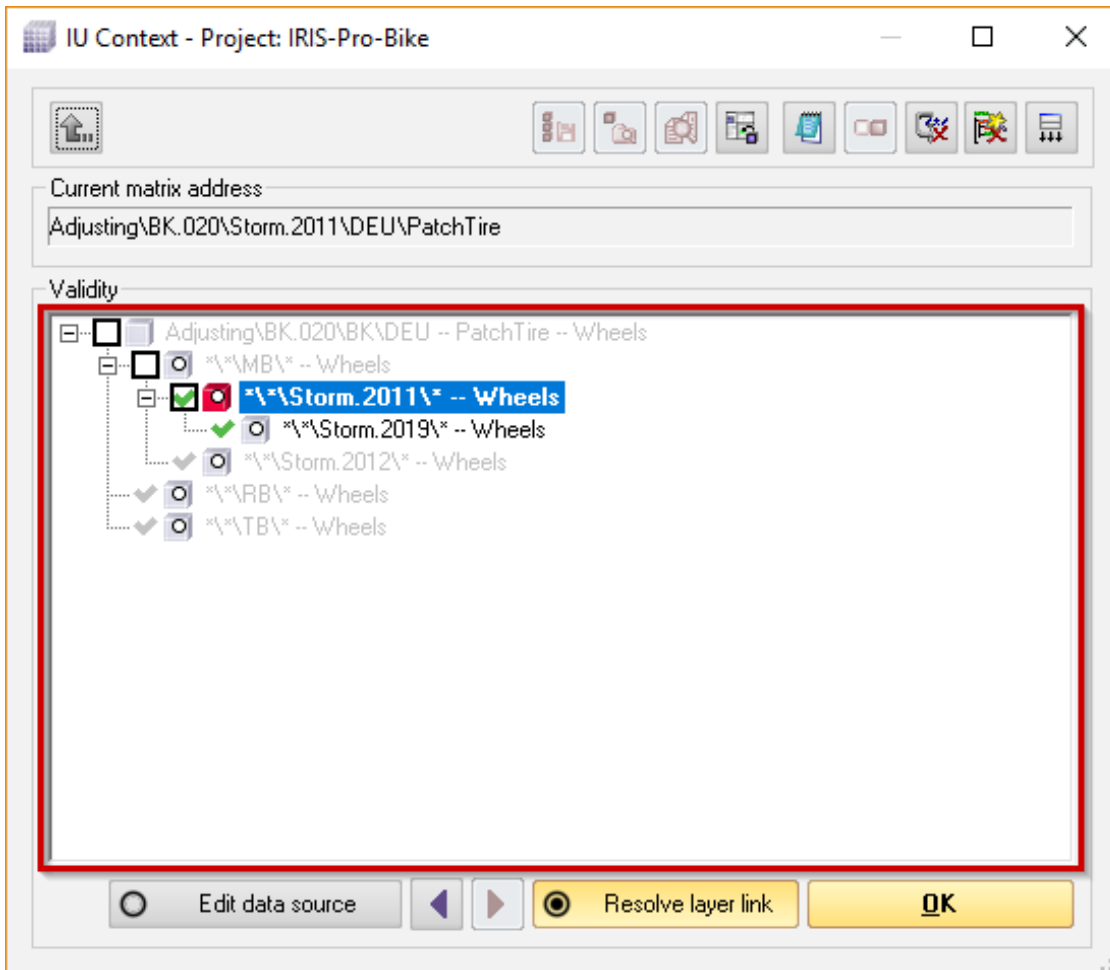
Layer link sequences can run across many projections. In certain cases, the user wants neither to edit the data source nor to resolve the layer link at the current location, but rather to resolve at an intermediate level in the layer link sequence.

Example from documentation for a bicycle

The documentation for the handlebars in a model series is identical for the model years 2015, 2016, 2017, and 2018. A variant layer link was defined as a sequence layer link on each subsequent model. For the 2019 model, changes were entered; however, in doing so, factual errors in an IU were discovered that need to be corrected for the model years 2017 and 2018, but have been deemed irrelevant for 2015 and 2016. This IU should therefore be resolved neither at the data source (2015 model) nor at the IU currently to be entered (2019 model), but rather on the 2017 variant.

After opening the dialog, the user can now use the **'Select previous level in layer link sequence'** or **'Select next level in layer link sequence'** buttons (arrow to the left or right) to navigate through intermediate projections of the layer link sequence and to resolve the layer link at any location. The location for resolving (and editing) is marked with red. If the user resolves the layer link without additional navigation, the layer link is resolved at the matrix address where the dialog was originally opened.

Revisions in symbols and design

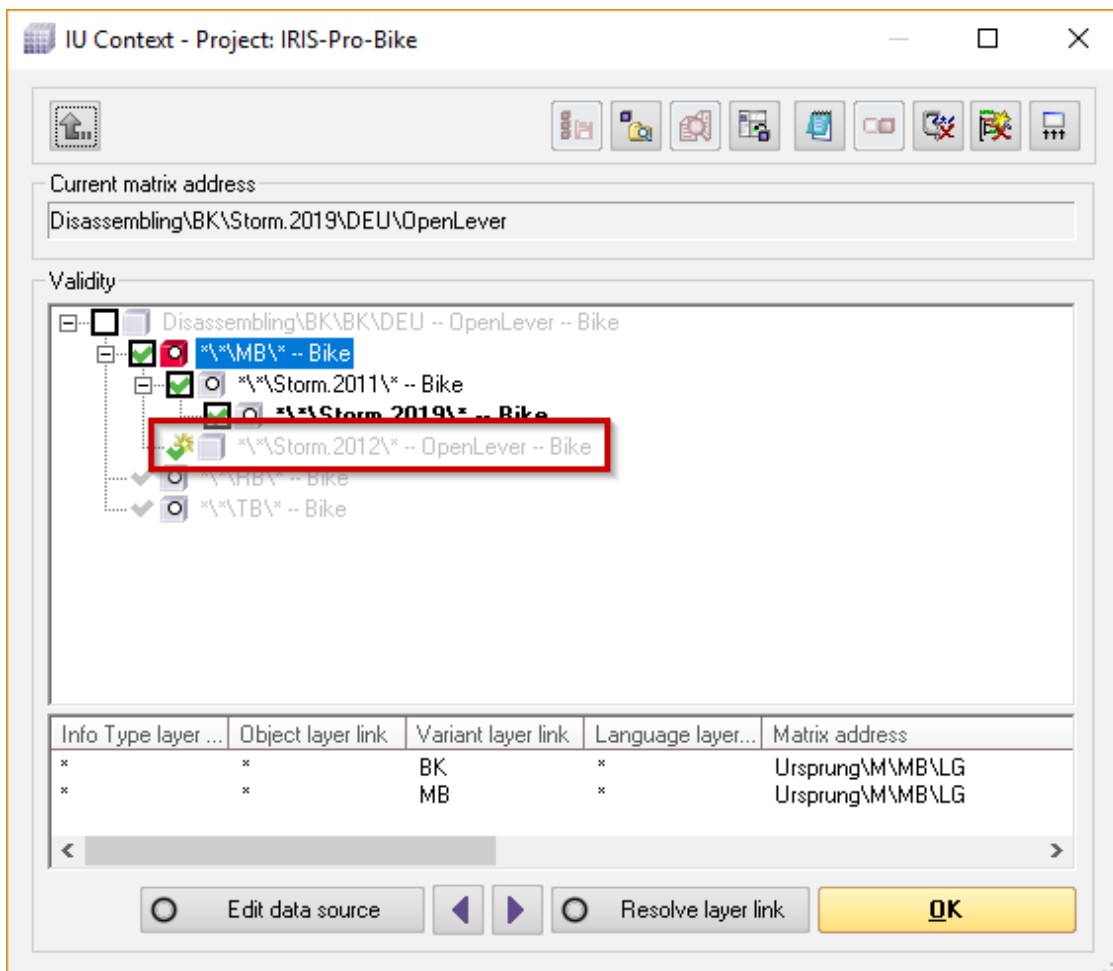


'Validity' dialog area

The 'IU context' dialog was also improved with regard to the symbols in the 'Validity' area. There were certain features there that unnecessarily complicated using the dialog. With the new design, the dialog can continue to be operated quickly and is more accessible for ,GRIPS' beginners.

- Matrix addresses that cannot be selected for resolving are also not indicated with a checkbox. This is the case when the user does not open the dialog to edit an IU or a matrix address, or the respective IU is not found in the layer link sequence of the IU or matrix address opened for editing.
- Only those matrix addresses that can be selected for resolving receive checkboxes. The user makes a selection by clicking the checkbox or by using the 'Select previous level in layer link sequence' or 'Select next level in layer link sequence' navigation buttons.
- The IU or matrix address to be opened for editing is always displayed in bold in the dialog.
- The location in the layer link sequence selected for resolving the layer link is marked with a red cube.
- All matrix addresses that will be affected by the changes (i.e., by resolving the layer link) receive a green checkmark.
- Matrix addresses not affected by the changes are displayed in gray.
- The 'Resolve layer link' and 'Edit data source' buttons have been given a design that emphasizes their use as radio buttons: There are circles at the front of the buttons (as usual for radio buttons), and the buttons as a whole can be easily operated or selected in the case of repeated use.

16.09.2019 / 13:03:25



Asterisks for IUs to be newly created

- An asterisk next to the green checkmark indicates if changes to a matrix address are effected through a layer link but the selected IU cannot be resolved at the same matrix address. The asterisk conveys that although the IU cannot be resolved here, if new IUs are created via the **„GRIPS Editor“**, these new IUs will be projected to this location.

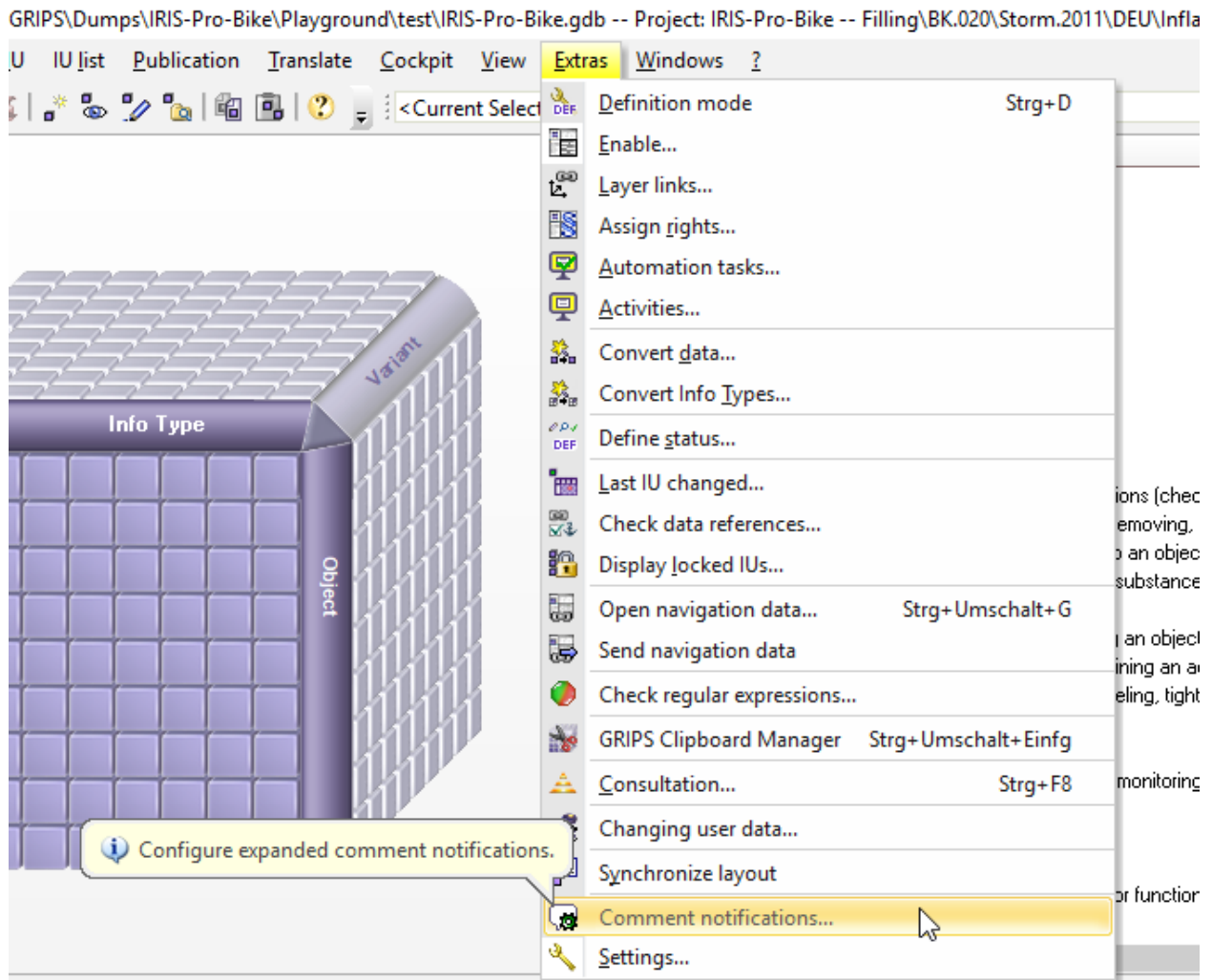
Example from documentation for a bicycle

In the example image, the IU with the **„OpenLever“** IU anchor should be resolved on the **„MB“** variant. There are layer links from the **„MB“** to the **„Storm.2011“** and **„Storm.2012“** variants, as well as from the **„Storm.2011“** to the **„Storm.2019“** variants.

Changes for the **„OpenLever“** IU will not affect the **„Storm.2012“** variant, which is why the entry is grayed out. The reason for this is that the IU was previously resolved on this variant, and a data source was created there.

However, if the GRIPS Technical Writer creates additional IUs on the **„MB“** variant in the **„GRIPS Editor“**, these will also be projected onto the **„Storm.2012“** variant and will also be available there.

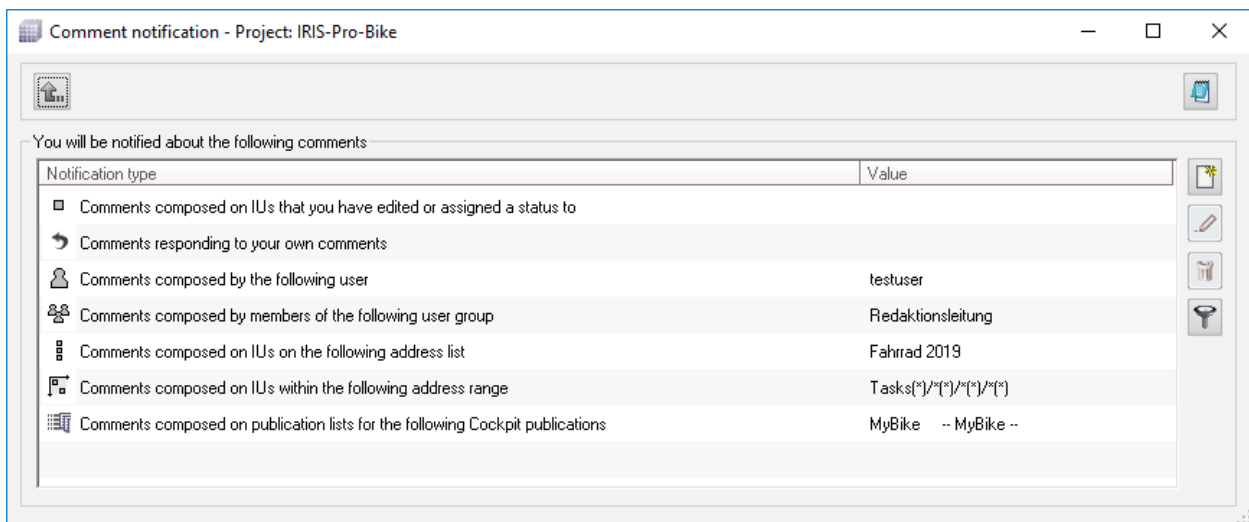
1.1.2 Configurable comment notifications (request for feature)



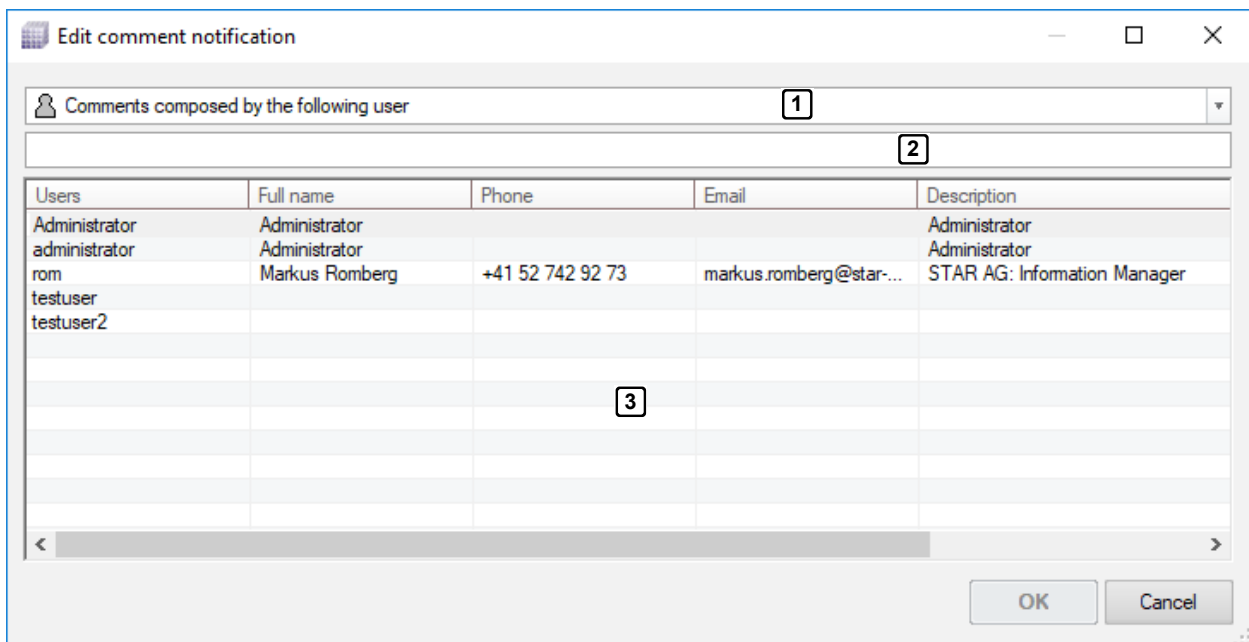
By default, GRIPS users are only informed about new comments in two scenarios: Either a comment has been made on an IU that the relevant GRIPS user is editing or to which they have assigned a status, or a reply has been given to a comment that was made by the relevant GRIPS user. These two types of notifications cannot be edited or removed.

Furthermore, users, user groups, address ranges and address lists for which you wish to provide notifications on new comments can now be specified. The user is therefore free to determine which comments are of interest to them.

16.09.2019 / 13:03:25

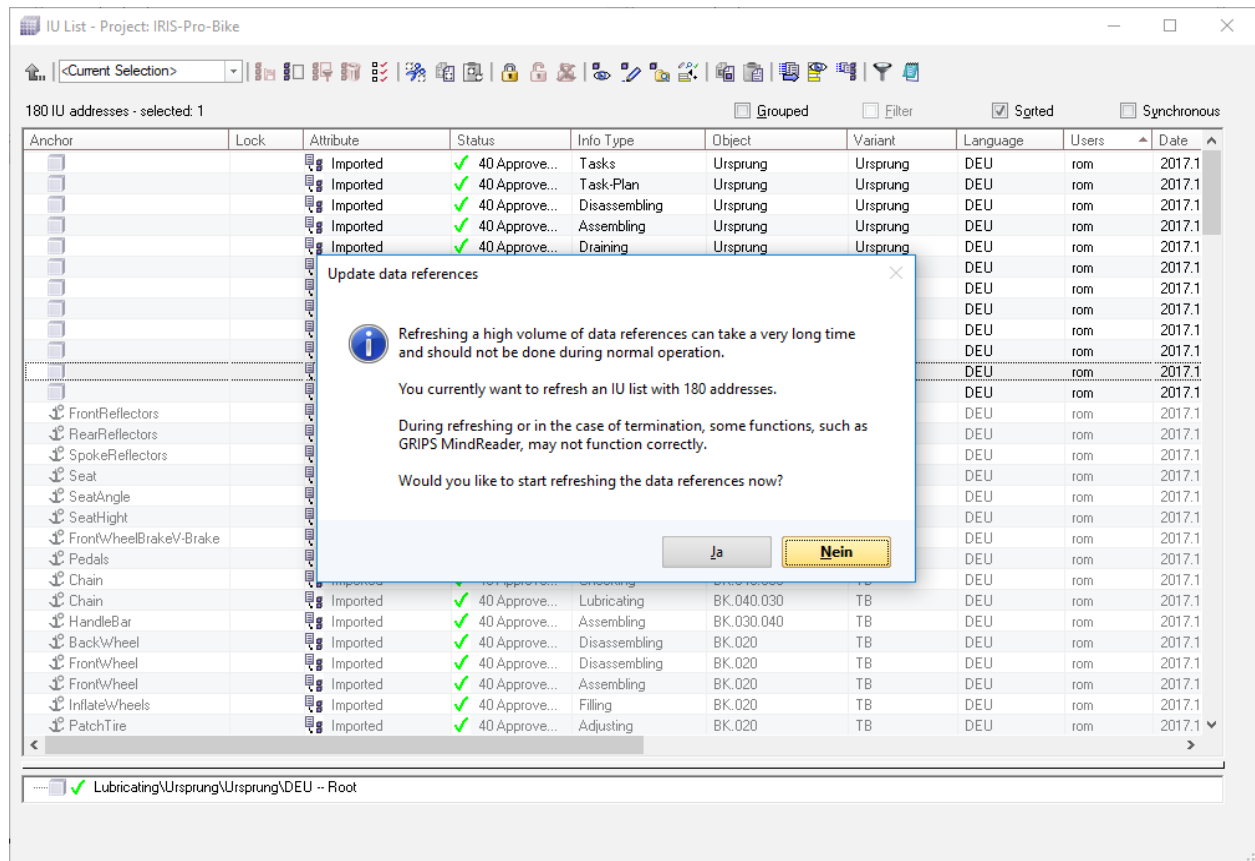


To create a new comment notification, open the **‘Extras‘** menu in the **,GRIPS Matrix‘** and select the **‘Configure comment notifications...‘** entry. In the **‘Configure comment notifications – Project: <project name>‘** dialog, all configured comment notifications can be viewed, and new notifications can be created as needed via the **‘Create new item‘** button.



In the subsequent dialog, select a type of notification (1) as well as a value for the notification from the picklist (3). These can be individual users or user groups, address lists etc., for example. You can also search for individual values (2). After clicking on **‘OK‘**, you will from then on be notified about new comments according to your configuration (e.g., about new comments from a specific user or on an information unit that is part of the indicated address list etc.).

1.1.3 More precise information on duration of data reference refreshing



The **'Refresh data references'** function can be called up to the **,GRIPS Matrix'** grid as well as to an opened IU list with the command **,Ctrl+Alt+T'**.

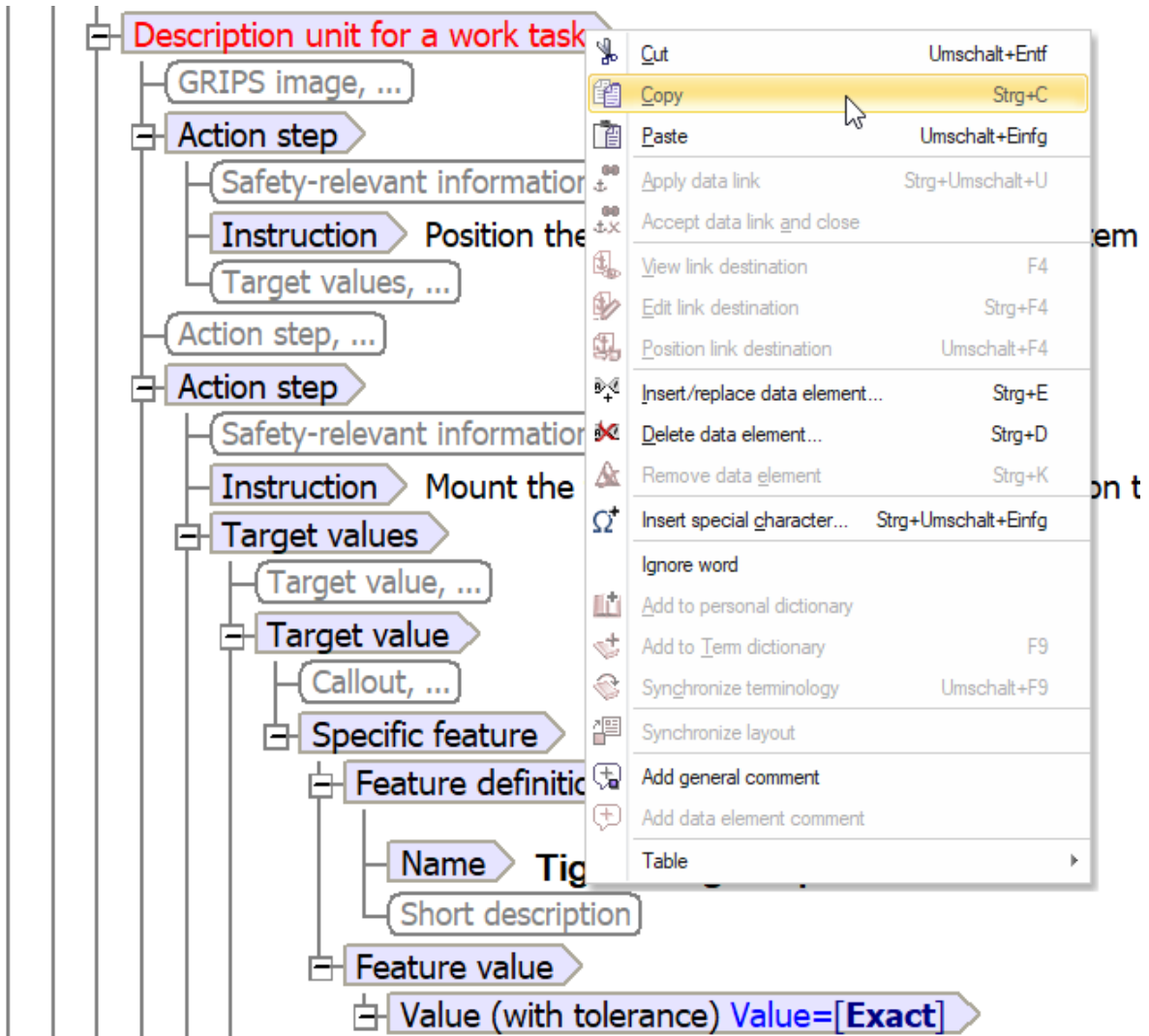
If the function is called up to the grid, the data references for the entire **,GRIPS project'** are refreshed. The message is displayed here as usual.

The message displayed before the data references from the IU list are refreshed has been adapted as shown in the image. The information symbol appears, and the number of affected IU address is also given.

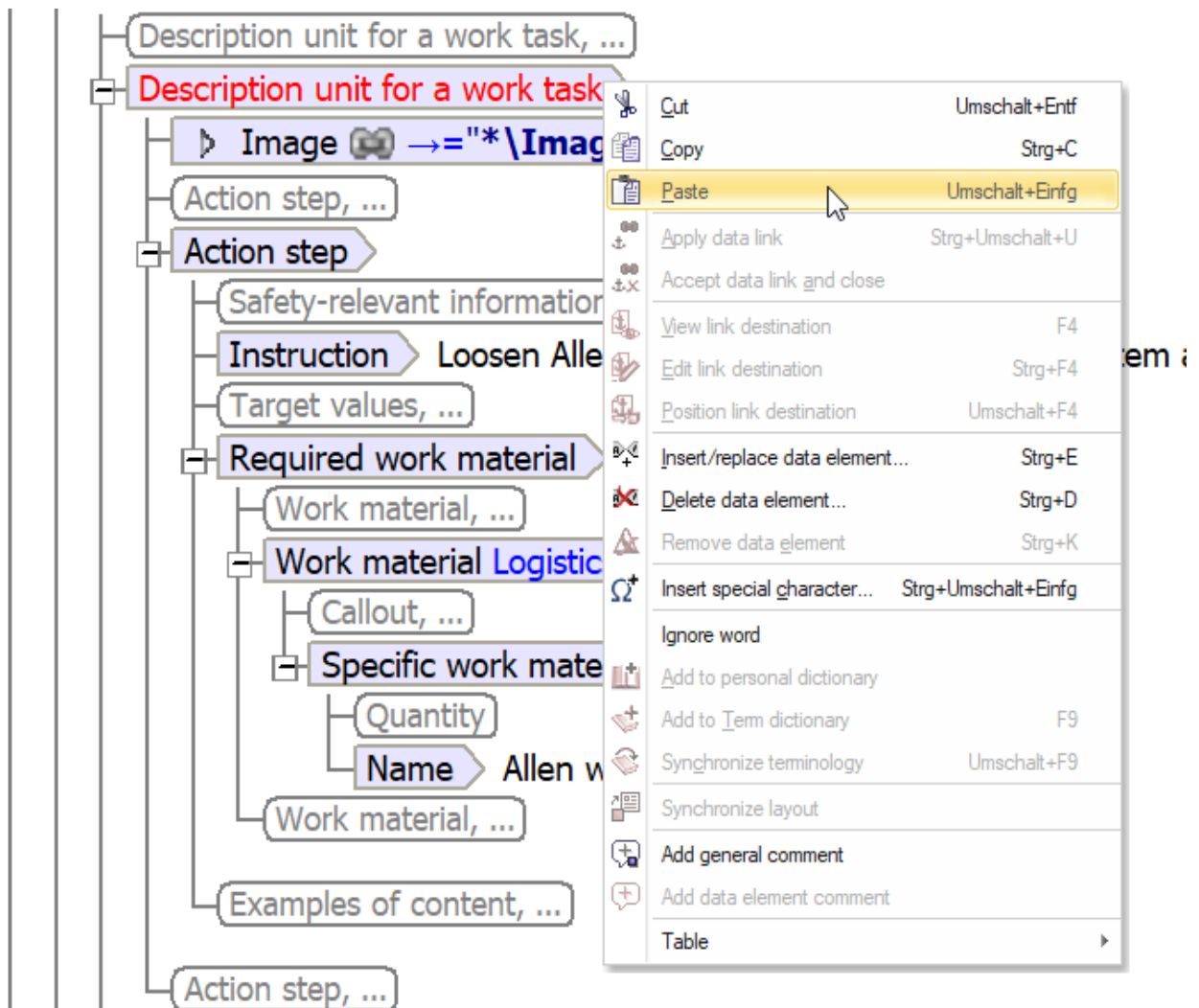
16.09.2019 / 13:03:25

1.2 ,GRIPS Editor'

1.2.1 Replace data elements and inclusions using Cut and Paste



The data element 'Description unit of a work' is copied to the clipboard.



The copied data element 'Description unit of a work' is inserted in the place of another 'Description unit of a work'.

Up until now, ,GRIPS' users could copy data elements, inclusions, and text in the ,GRIPS Editor' to the clipboard (either via the menu item 'Copy' in the 'Edit' menu or using ,Ctrl+C'). The copied data could be inserted at an appropriate location with ,Ctrl+V' or via the menu item 'Edit', 'Paste'. This functions both within the ,GRIPS Editor' window as well as between different windows.

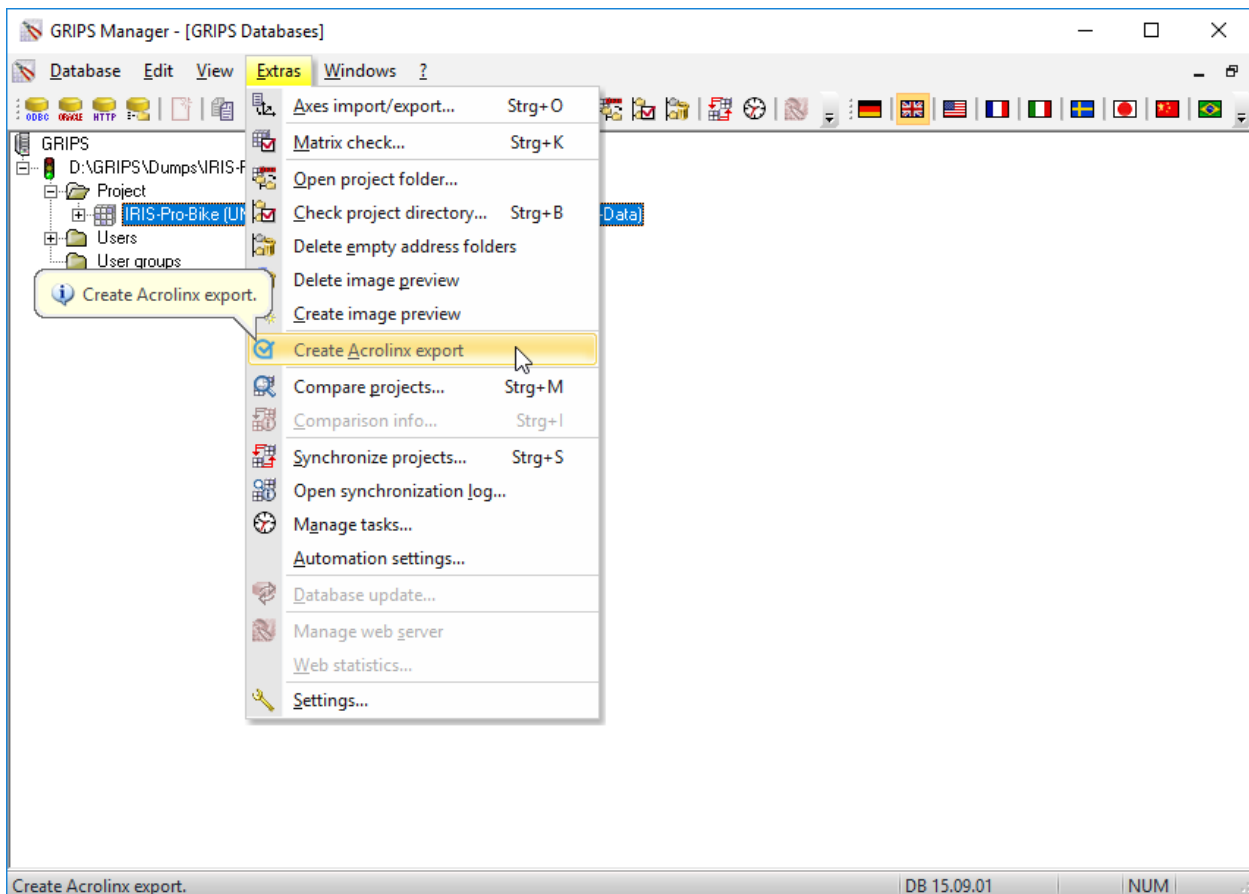
If data elements or inclusions were copied, until now, they could only be pasted onto insertion tags. It was therefore not possible to replace *already existing* data elements with copied ones. This function has now been amended in ,GRIPS'.

In doing so, data elements and inclusions can now be replaced with copied data elements and inclusions. The individual elements do not necessarily need to be identical; if the structure of your ,GRIPS' project allows for it, an 'Action step' can be replaced with a 'Test step', for example.

The function simplifies work with the ,GRIPS Editor' in situations in which the ,GRIPS Technical Writer' needs to quickly move or copy data between IUs or within an IU.

1.3 ,GRIPS Manager‘

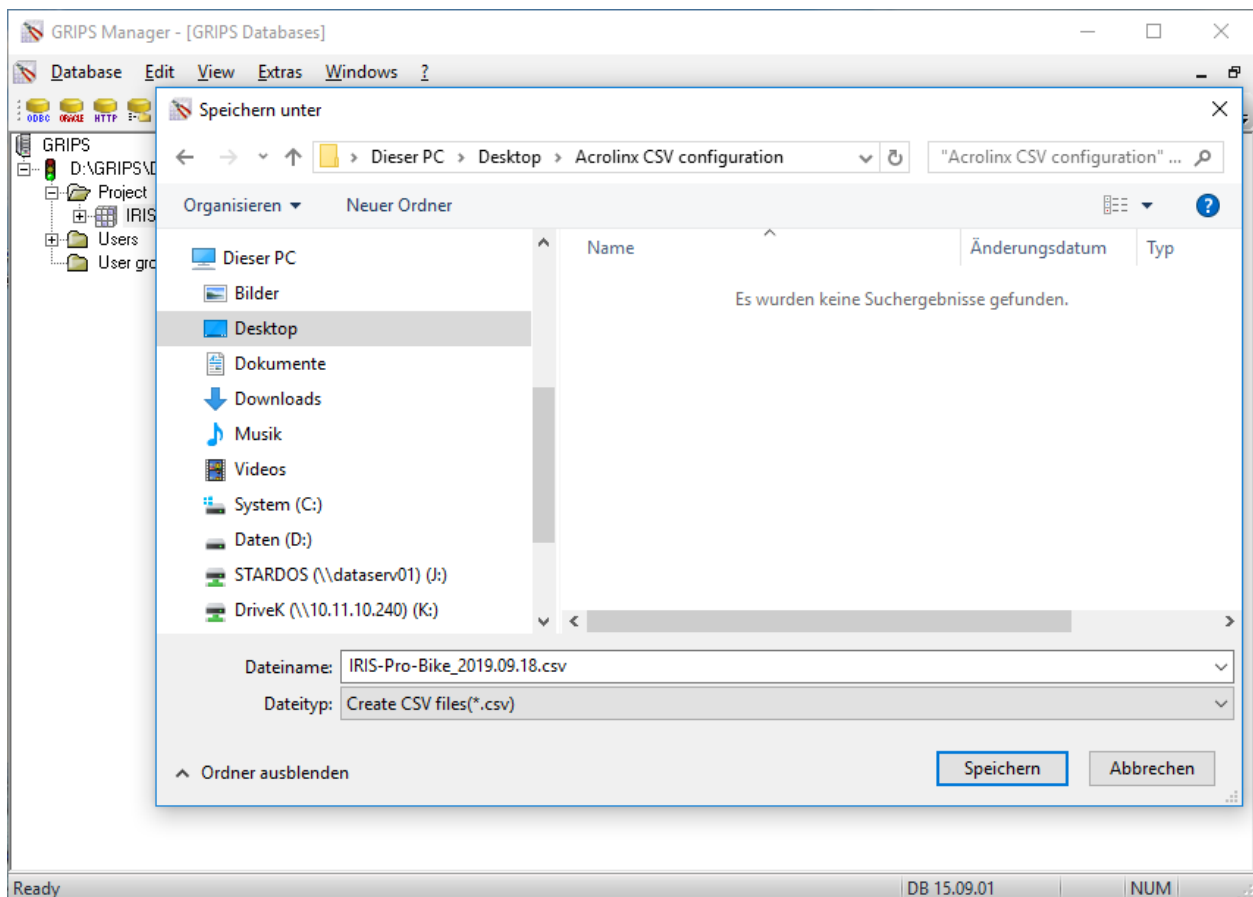
1.3.1 Functionality to export configuration files for Acrolinx



The Acrolinx text review can be integrated into ,GRIPS‘ in order to check data quality with regard to spelling, grammar, style, as well as additional categories. In doing so, the Acrolinx Sidebar is displayed directly in the ,GRIPS Editor‘, which allows the text review to be carried out quickly and simply, and proposed corrections adopted directly. If you have questions about the application or purchase of Acrolinx integration, contact your GRIPS Information Manager or create a ticket for your GRIPS Support.

If you would like to use the integration of the Acrolinx Sidebar in the ,GRIPS Editor‘, it is important that the Acrolinx Server is configured for your GRIPS project. This is done using a file in CSV format (comma-separated value), which contains a list of the data elements used in your project along with their descriptions.

In the ,GRIPS Manager‘ a functionality was additionally expanded that creates a list of this kind for you. First select your ,GRIPS‘ project in the ,GRIPS Manager‘ and click on either the British or German flag to set the language of the CSV file (Acrolinx accepts English and German CSV files). Then click on the ‘**Create Acrolinx export**‘ entry in the ‘**Extras**‘ menu.



Save the file under any file name and send it to your Acrolinx configuration service; they will carry out the configuration of the Acrolinx Server for you.



CAUTION

Current CSV file If the ITD of the **,GRIPS'** project is changed, the CSV file on the Acrolinx Server is not automatically updated. This can result in problems when using the Acrolinx Sidebar.

- ▶ To guarantee error-free functioning of the Acrolinx Sidebar in **,GRIPS Editor'**, the CSV file must always be updated. In the case of ITD changes, export a new version and send this to your Acrolinx configuration service.

2 Bug fixes and other adjustments

2.1 General adjustments

2.1.1 Support for PDF 2.0 standard

The ,DynaPDF©‘ library from the third-party supplier ,DynaForms GmbH‘, integrated into ,GRIPS‘, now supports the new PDF 2.0 standard. As a result, the requisite conditions have been created for integrating the following improvements in this standard into ,GRIPS‘:

New functions:

- Options for adding PDF document source, data, and other file formats as attachments or as metadata
- Conversion options in HTML for small terminal devices
- More accessible documents that are much easier to use for text extraction
- Current standard 256-bit AES encryption
- Support for rich media comments, geospatial functions such as PRC, a 3D format

Expansion of existing functions

- Preview images for embedded files
- Unicode-based passwords
- Ability to store real distance information (for geodata)



Note

The functions or improvements listed above are not yet integrated into ,GRIPS‘, but they can be implemented through attached libraries upon request. If you are interested in one of these functions, notify us or contact your ,GRIPS‘ Support.

2.1.2 Improved use of ,GRIPS‘ windows and dialogs on multiple monitors

,GRIPS‘ was improved such that all ,GRIPS‘ modules are consistently reopened on the same monitors (i.e., on the monitor where they were previously displayed). This affects even the most frequently used dialogs in the individual modules. If only one monitor is available, ,GRIPS‘ displays all content there.

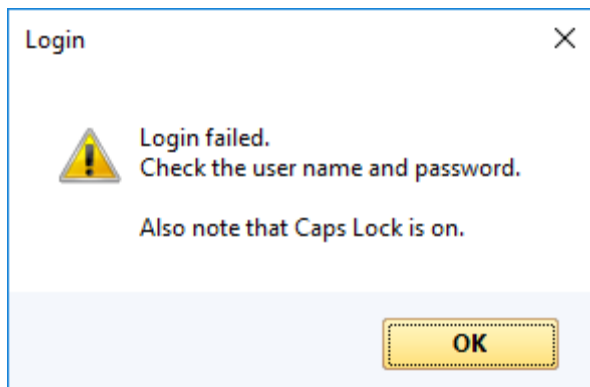
This improves ,GRIPS‘ operation, above all in cases where certain modules need to be consistently displayed on certain monitors (e.g., ,GRIPS Matrix‘ on one, ,GRIPS Editor‘ on another monitor).

2.1.3 Optimized operation for extra-long publication types

The presentation of the selection menu for publication type was redesigned; when the name of a publication type is extra-long, it can now be easily read at all times.

2.2 ,GRIPS Matrix'

2.2.1 Security improved during login



The messages in the case of a wrong user name or password have been standardized so that it is no longer possible to determine which of the two entries was wrong. If the Caps Lock key is activated, this is also indicated in the error message (see image).

This measure improves security and data protection during ,GRIPS' operation.

2.2.2 Behavior corrected in automation tasks

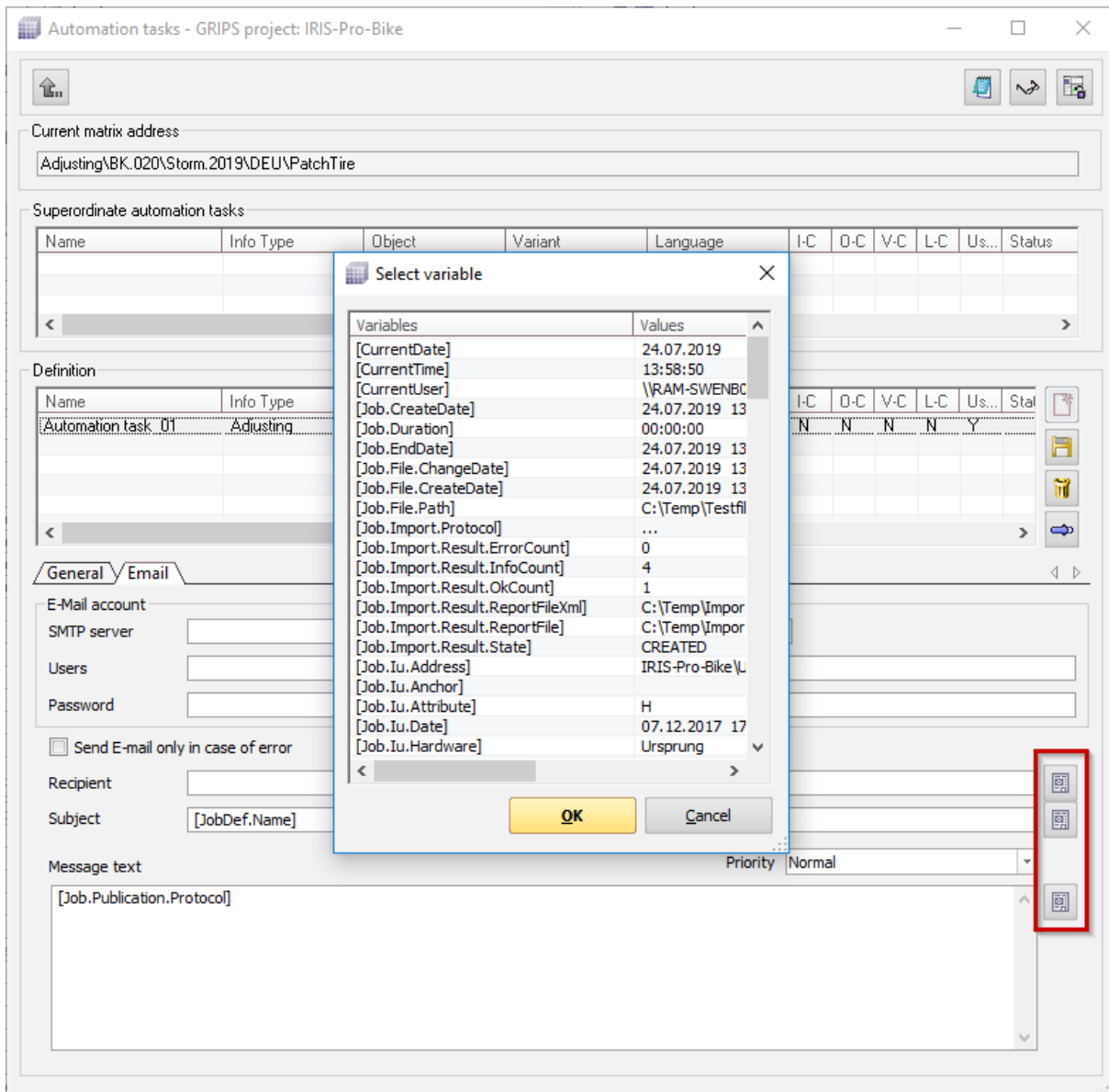
Renaming an automation task led to duplicate entries. In the process, a new automation task would be created without the old one being deleted. The problem has been solved.

2.2.3 Return to data improved

Given the appropriate publication type (e.g., online preview), ,GRIPS' Technical Writers can return to ,GRIPS' data from the online publication in the web browser with a double click and continue editing the corresponding information unit.

Due to an altered Windows function, this functionality, called Return, was compromised in the ,GRIPS **WebMatrix'**. Now the Return works again reliably.

2.2.4 Functioning of email templates improved in automation tasks



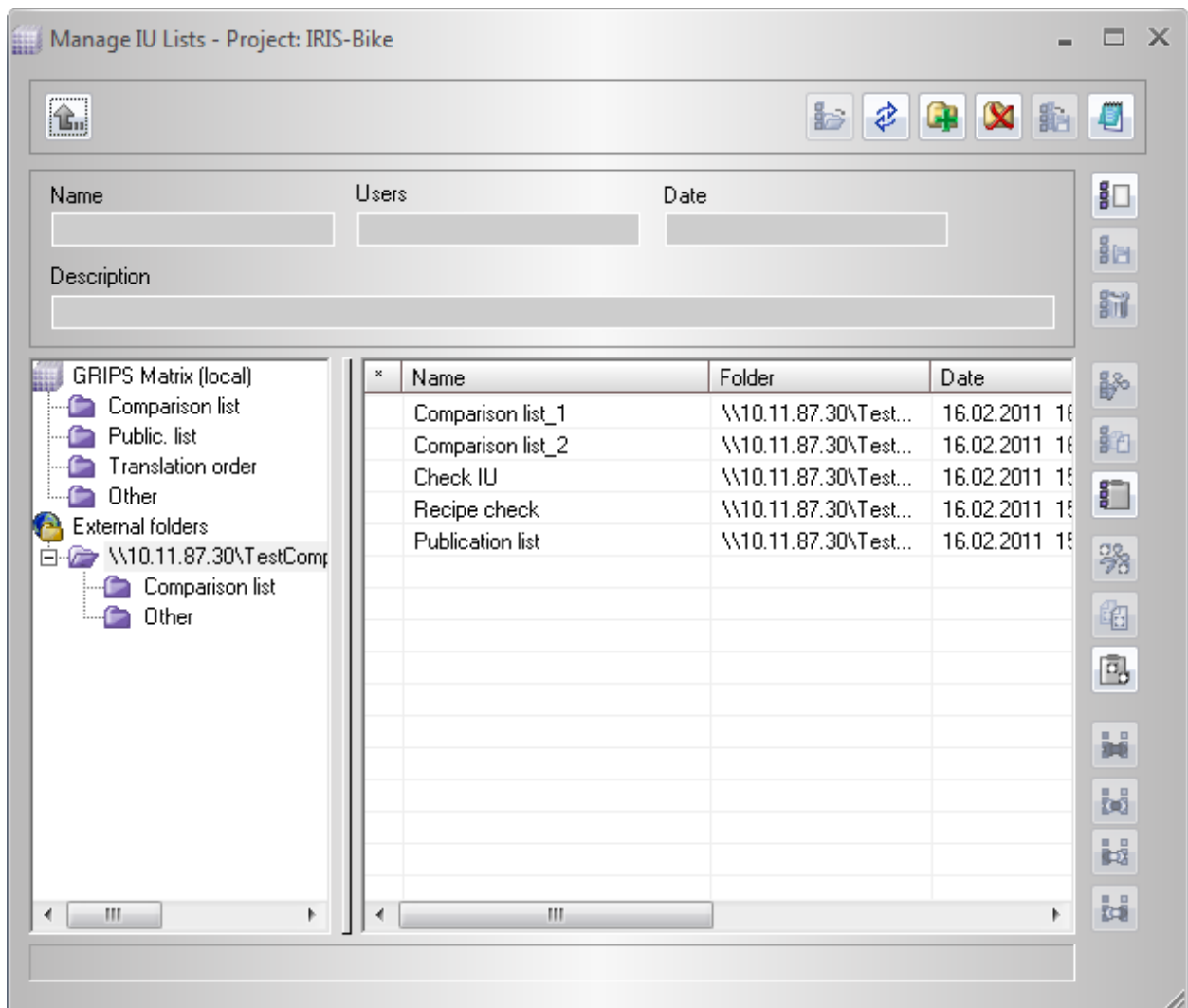
When creating an automation task, ,GRIPS' users can specify if they want to have an email sent when activity occurs (i.e., an automation task is carried out). The content of this email can be determined in the **'Automation tasks - GRIPS project: (project name)'** dialog, under the **'Email'** tab; it can be entered as free text, or dynamically generated content can be integrated using predefined variables. In doing so, email templates can be defined that inform the recipient in detail about the results of the activity.

Until now, the predefined variables, which refer to information units as well as to their statuses, did not use the values from the time of the activity, but rather updated values from the time of sending. This behavior has been corrected.

2.2.5 Message for saving/discarding rights assignments

In the 'Assigning rights - project: <project name>' dialog, up until now, there was no message if the user or user group was switched to different rights before saving. Starting with this version of ,GRIPS', the user receives a message confirming whether the rights should be saved or the process of user/user-group switching should be canceled.

2.2.6 Improved copying of IU lists



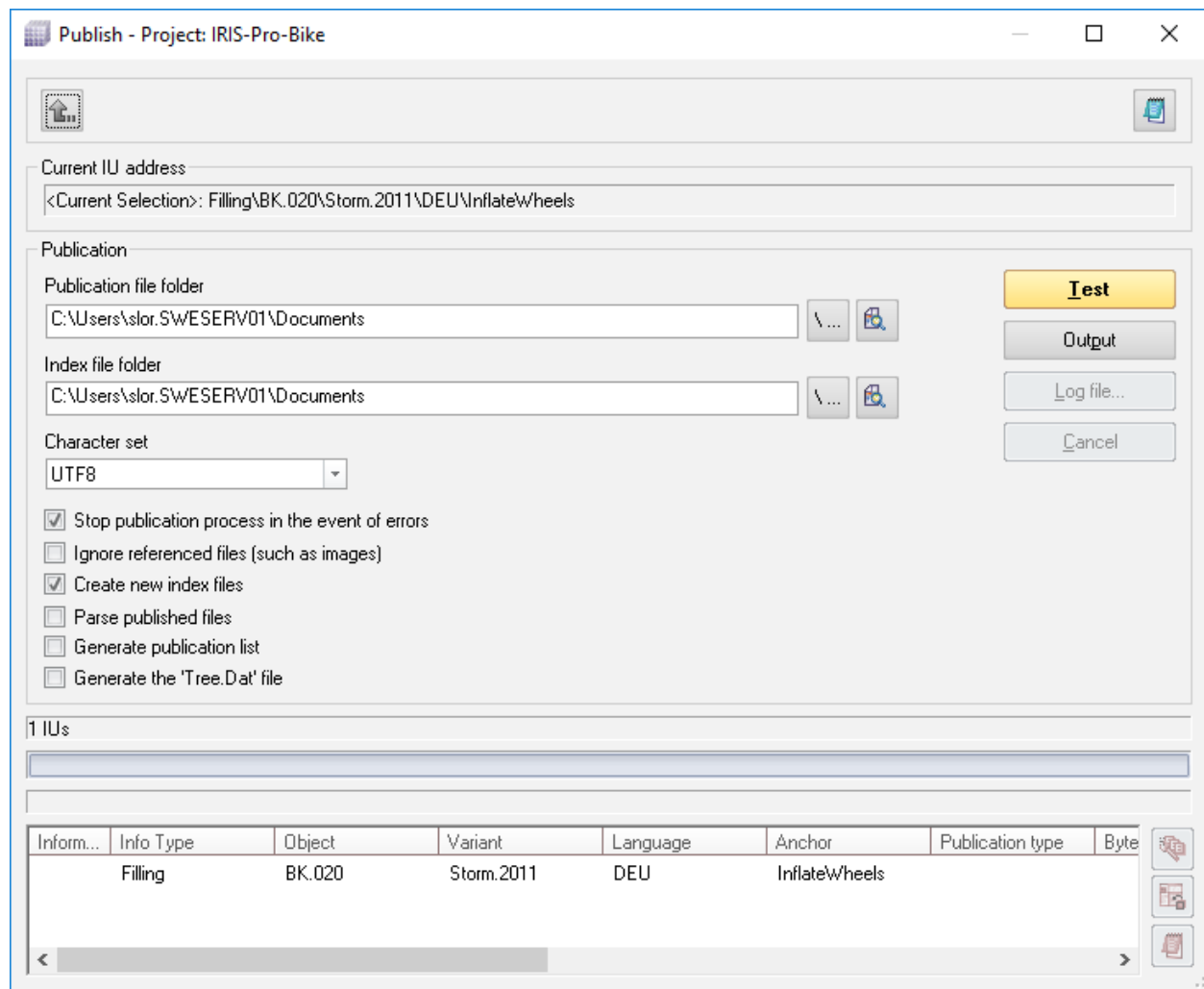
GRIPS users want to share with each other while working; for example, it should be possible to distribute IU lists among editing members. In the 'Manage IU Lists - Project: <project name>' dialog, previously created IU lists can be copied, moved or deleted at will, even in external directories (i.e., directories that are not located in the GRIPS user's system). Editors can therefore define a directory of this kind at a central location, and IU lists with relevant IU addresses can be saved there.

After a switch of the ,GRIPS Matrix' into an edited version, IU lists located in external directories were no longer copied or moved correctly. This behavior has now been corrected.

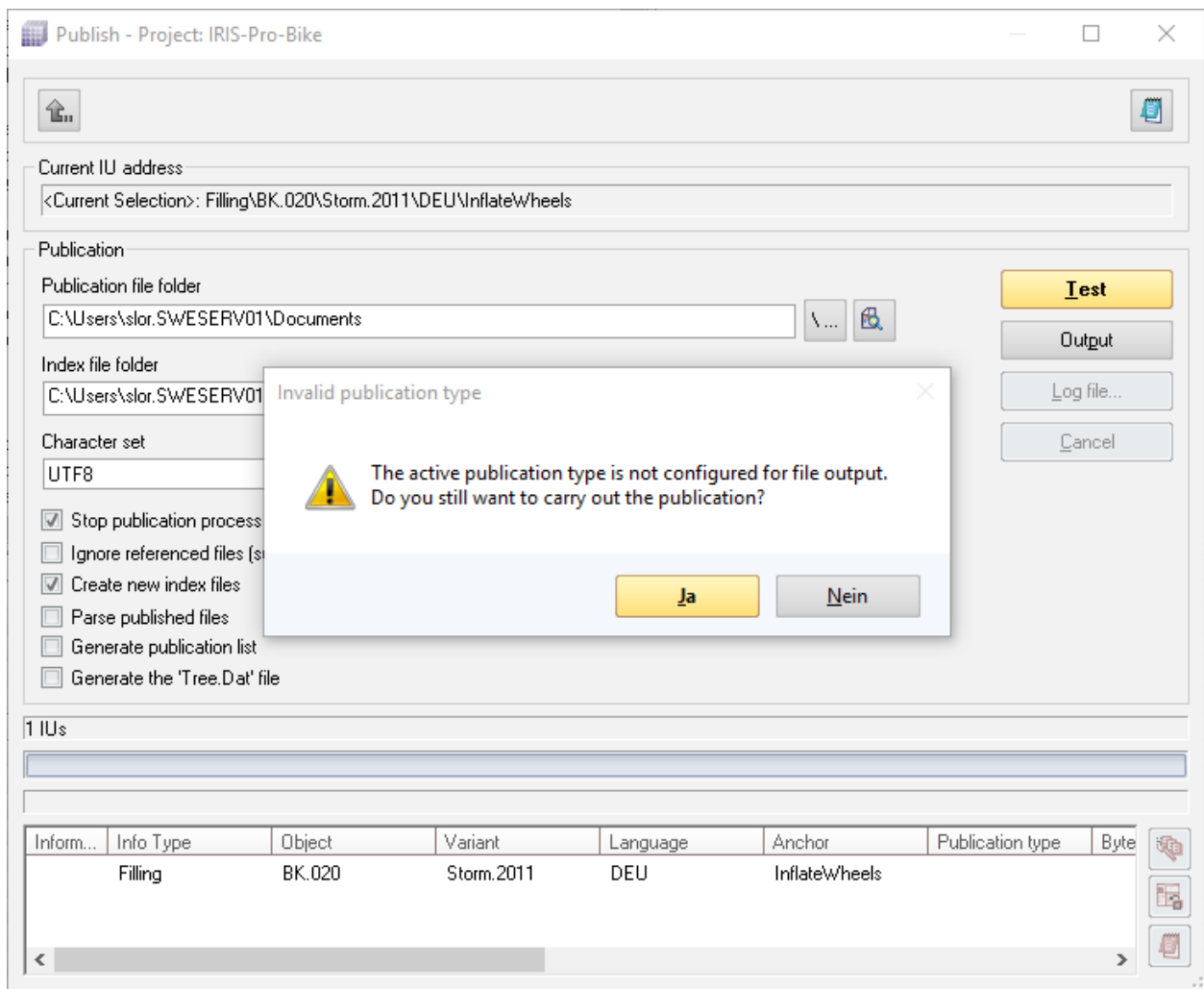
2.2.7 'Create new...' and 'Create and edit new...' also possible on IU anchors

Creating and editing new information units is simplified: It is now also possible to carry out 'Create new...' as well as 'Create and edit new...' functions if a different IU anchor is currently selected. Until now, this only worked if the IU address was selected either in the grid of the ,GRIPS Matrix' or in the title of the IU anchor list.

2.2.8 New message for an inappropriate publication type



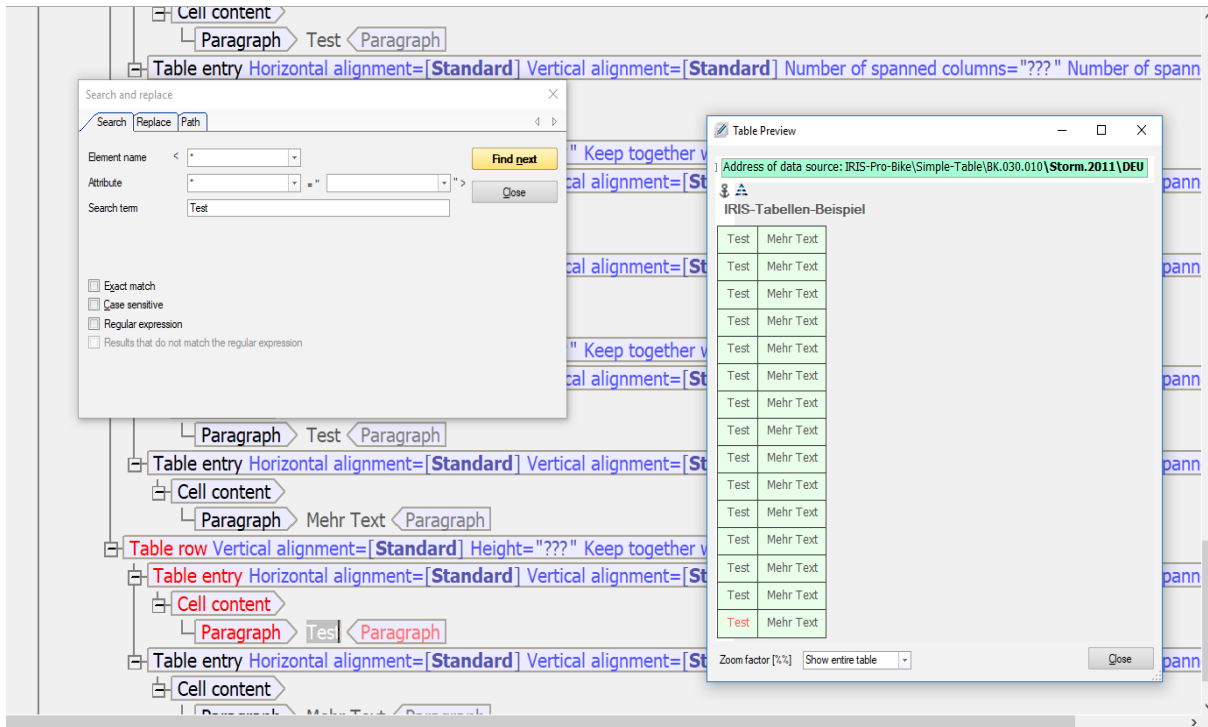
Depending on the publication type, during publication, content in ,GRIPS' is forwarded either directly to the ,GRIPS Viewer' or to the web browser for inspection of the layout, or else it is written to the hard drive as a file output. In the latter case, ,GRIPS' users can configure the file output in the 'Publish - Project: <project name>' dialog.



If the 'Publish - Project: (project name)' dialog was already opened and a publication type was selected that was not configured for file output (because it launched the 'GRIPS Viewer', for example), the publication failed without the user being notified about the problem. In the future, a corresponding message will be displayed.

2.3 ,GRIPS Editor'

2.3.1 Improved operation of search function for tables



When editing tables, **'Table preview'** can be activated in the **'Tables'** dynamic window. Even with the open **'Find and replace'** dialog, **'Table preview'** remains visible.

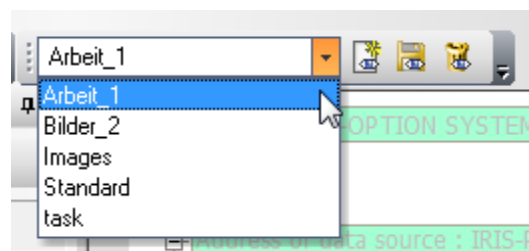
With this version of ,GRIPS' focus is automatically placed on the current cell of the table if matches are found in the **'Find and replace'** dialog.

2.3.2 Copying and pasting of ,GRIPS MindReader' suggestions optimized

Due to adjustments in the 'Track changes' function, it was not possible to insert ,GRIPS MindReader' suggestions without inclusions on previously selected data that contained inclusions. This now functions smoothly.

2.3.3 Presentation of layout profile ,Images' improved

Layout profiles in ,GRIPS Editor' determine the order and size of the ,GRIPS Editor' window. Two layout profiles are included: ,Standard' and ,Images'. However, individual layout profiles can also be created and saved. For layout profiles, ,GRIPS' distinguishes between doctype declarations. This means that a single layout profile is activated at all times for each doctype declaration (e.g., for the doctype declaration ,WORK'), and thus for all info types associated with this doctype



declaration (e.g., for the info types ,Assembling', ,Disassembling' and ,Adjusting').

The presentation was improved for the included layout profile ,Images' so that image data can now be more efficiently and smoothly edited or managed with ,GRIPS'.

2.4 ,GRIPS Viewer'

2.4.1 Support for very long URLs

Further information regarding the subject: <http://chart.apis.google.com/chart?chs=500x500&chma=0,0,100,100&cht=p&chco=FF0000,FFFF00|FF8000,00FF00|00FF00,0000FF&chd=t:122,42,17,10,8,7,7,7,7,6,6,6,5,5&chdl=android|java|stack-trace|broadcastreceiver|android-ndk|Cuser-agent|android-webview|webview|background|multithreading|android-source|sms|adb|sollections|activity|Chart> Our support is also happy to help you.

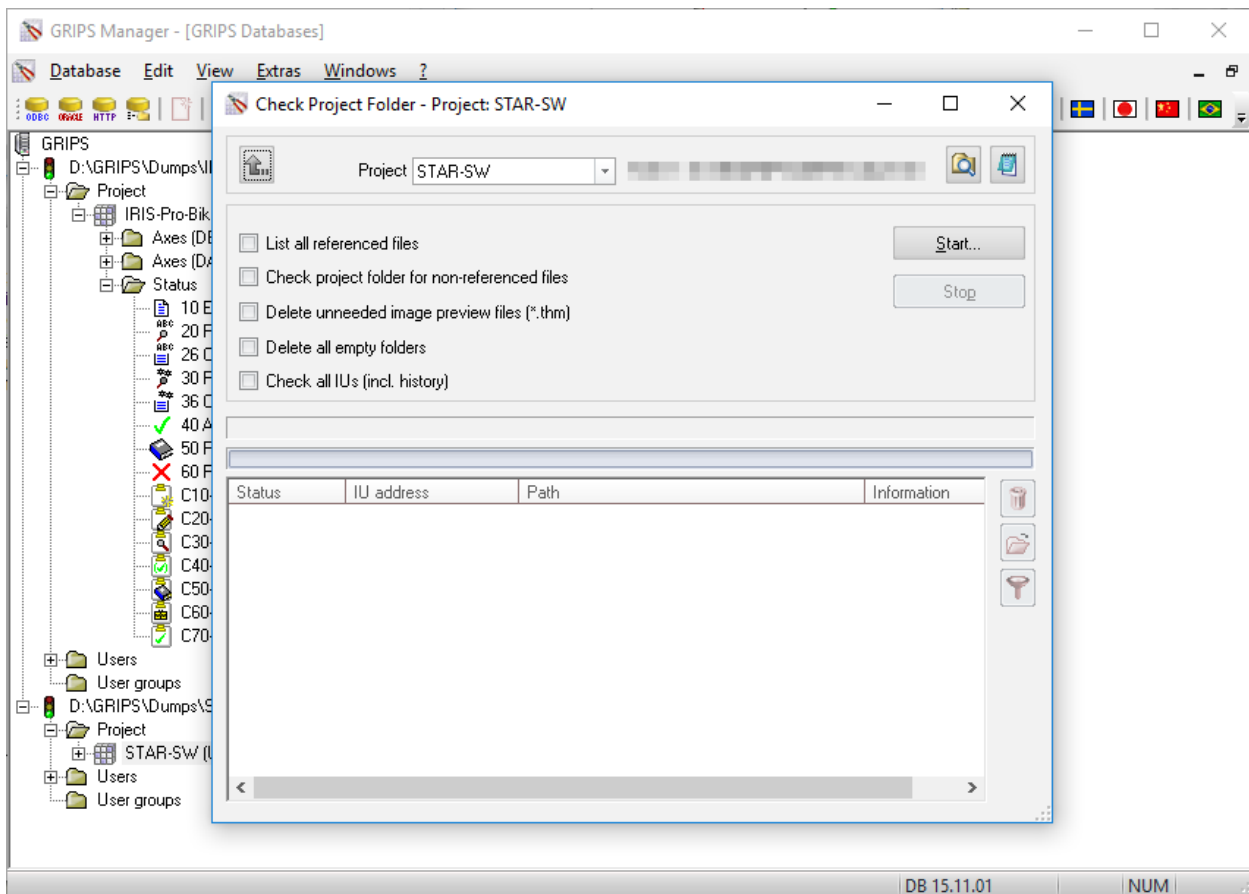
The ,GRIPS Viewer' now supports publications with very long URLs (longer than 260 characters). The URLs are displayed over multiple lines when necessary.

2.4.2 Improved image presentation

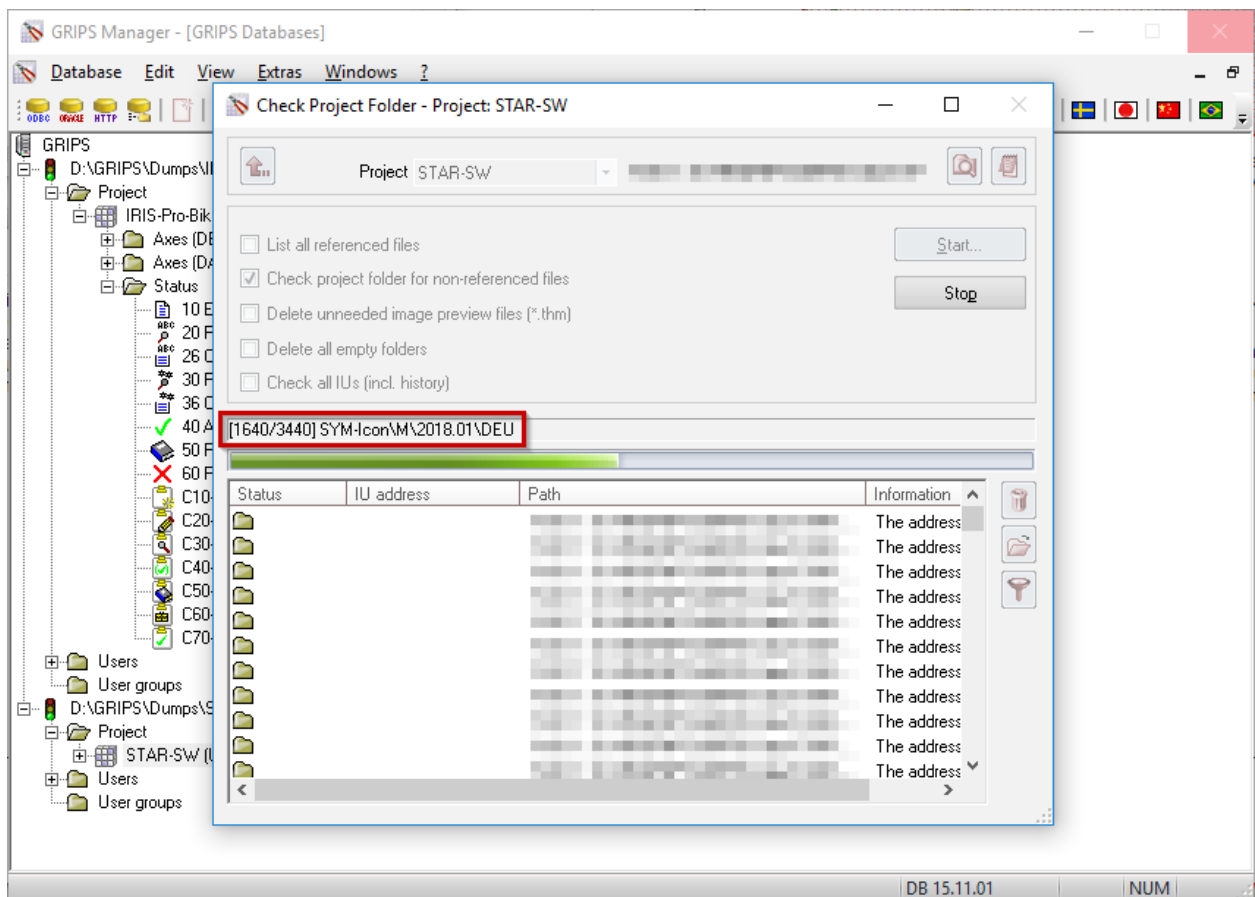
Varying resolutions and sizes of monitors resulted in different presentations of overlapping images in the ,GRIPS Viewer' if one of the images was in '.wmf' format. This only affected the presentation of images in the ,GRIPS Viewer', not the resulting PDF file, where the images were correctly embedded in the PDF. The presentation in the ,GRIPS Viewer' was corrected accordingly.

2.5 ,GRIPS Manager‘

2.5.1 Improved display during project folder check



The ,GRIPS‘ project folder contains all project-related files needed by ,GRIPS‘ for the publication of documents; this includes images and external documents, for example. GRIPS administrators can check this folder using the ,GRIPS Manager‘. Additionally, the user selects the entry ‘**Check project folder...**’ in the ‘**Extras**’ menu. In the subsequent dialog, various options can be selected on the basis of which the project folder should be checked; thus, the folder can be searched for non-referenced files (that is, files that are not embedded in any information unit) or unnecessary image preview files.



The progress bar is new, and informs the user in detail about how many IU addresses have already been checked and how many still remain. Thus, administrators can estimate more reliably how much time the check still requires.

2.6 ‚JadeToGrips‘

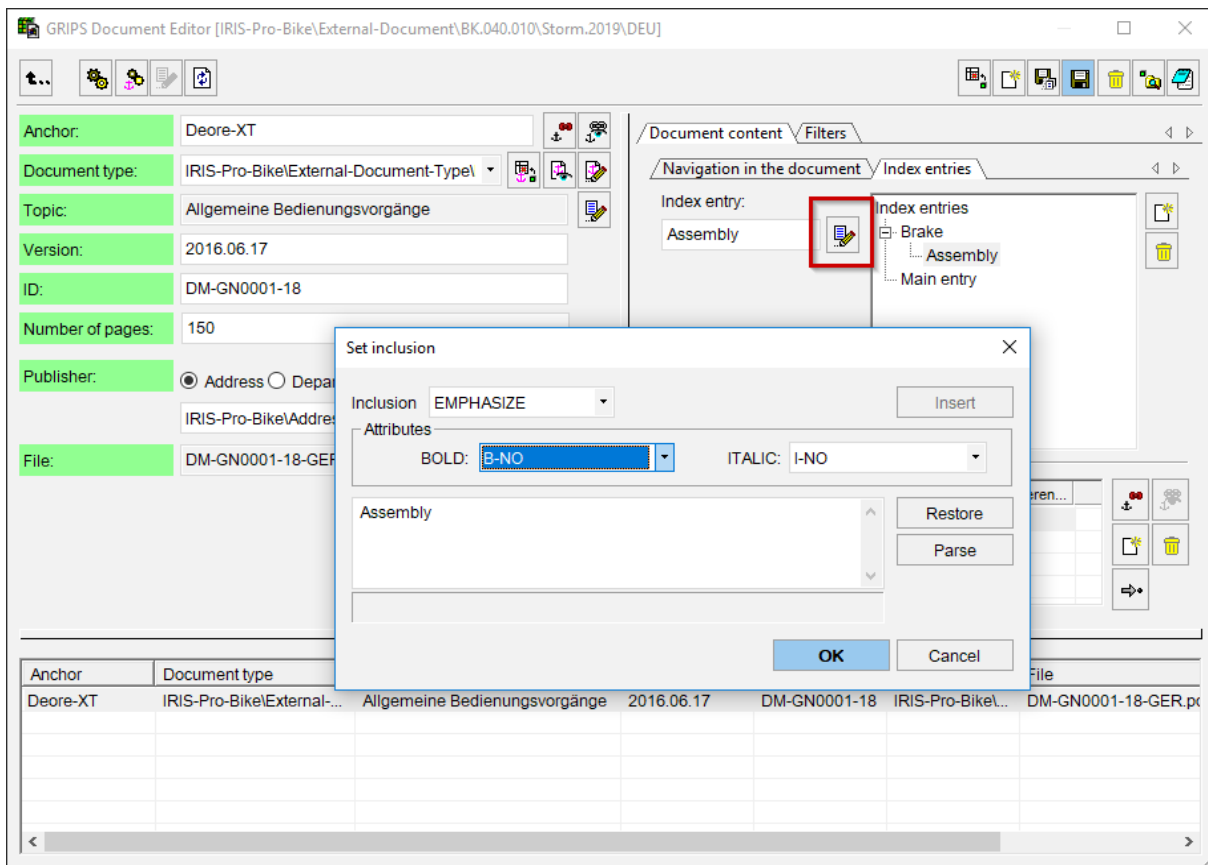
2.6.1 Online publication of multiple IU anchors

The simultaneous publication of multiple IU anchors with online publication types results in long URLs, which could cause publication to fail under certain circumstances. ‚GRIPS‘ was corrected so that even multiple IU anchors can be simultaneously published in this situation without any problems.

16.09.2019 / 13:03:25

2.7 ,GRIPS Document Editor‘

2.7.1 Inclusions now also set in index entries



Until now, it was not possible to set inclusions within index entries; the button for this was deactivated. The ,GRIPS‘ Document Editor has been expanded with the corresponding functionality. ,GRIPS‘ users can now additionally mark index entries through inclusion(s) (e.g., as bold, italics, as a proper name, etc.), via the button indicated in the image.



Note

This functionality is included in the ,GRIPS‘ Document Editor as of Version 2019.02 Build 08.

2.7.2 Interface simplified

Until now, the ,GRIPS‘ Document Editor included two distinct buttons for deleting document files (🗑️ ‘Delete referenced file’) and for importing a new document file (📄 ‘Import document [Ctrl+I]’).

For the sake of a simplified interface, the 🗑️ ‘Delete referenced file’ button was removed. Deleting a document file only makes sense if the corresponding information unit is also deleted; however, this is not possible if the IU was already loaded in the document editor.

Index

'Create new...' and 'Create and edit new...'

also possible on IU anchors 16

B

Behavior corrected in automation tasks 13

C

Configurable comment notifications (request for feature) 5

Copying and pasting of ,GRIPS MindReader' suggestions optimized 18

D

Design optimization and expansion of functions in 'IU context' dialog 1

F

Functionality to export configuration files for Acrolinx 10

Functioning of email templates improved in automation tasks 14

I

Improved copying of IU lists 15

Improved display during project folder check 20

Improved image presentation 19

Improved operation of search function for tables 18

Improved use of ,GRIPS' windows and dialogs on multiple monitors 12

Inclusions now also set in index entries 22

Interface simplified 22

M

Message for saving/discarding rights assignments 15

More precise information on duration of data reference refreshing 7

N

New message for an inappropriate publication type 16

O

Online publication of multiple IU anchors 21

Optimized operation for extra-long publication types 12

P

Presentation of layout profile ,Images' improved 18

R

Replace data elements and inclusions using Cut and Paste 8

Return to data improved 13

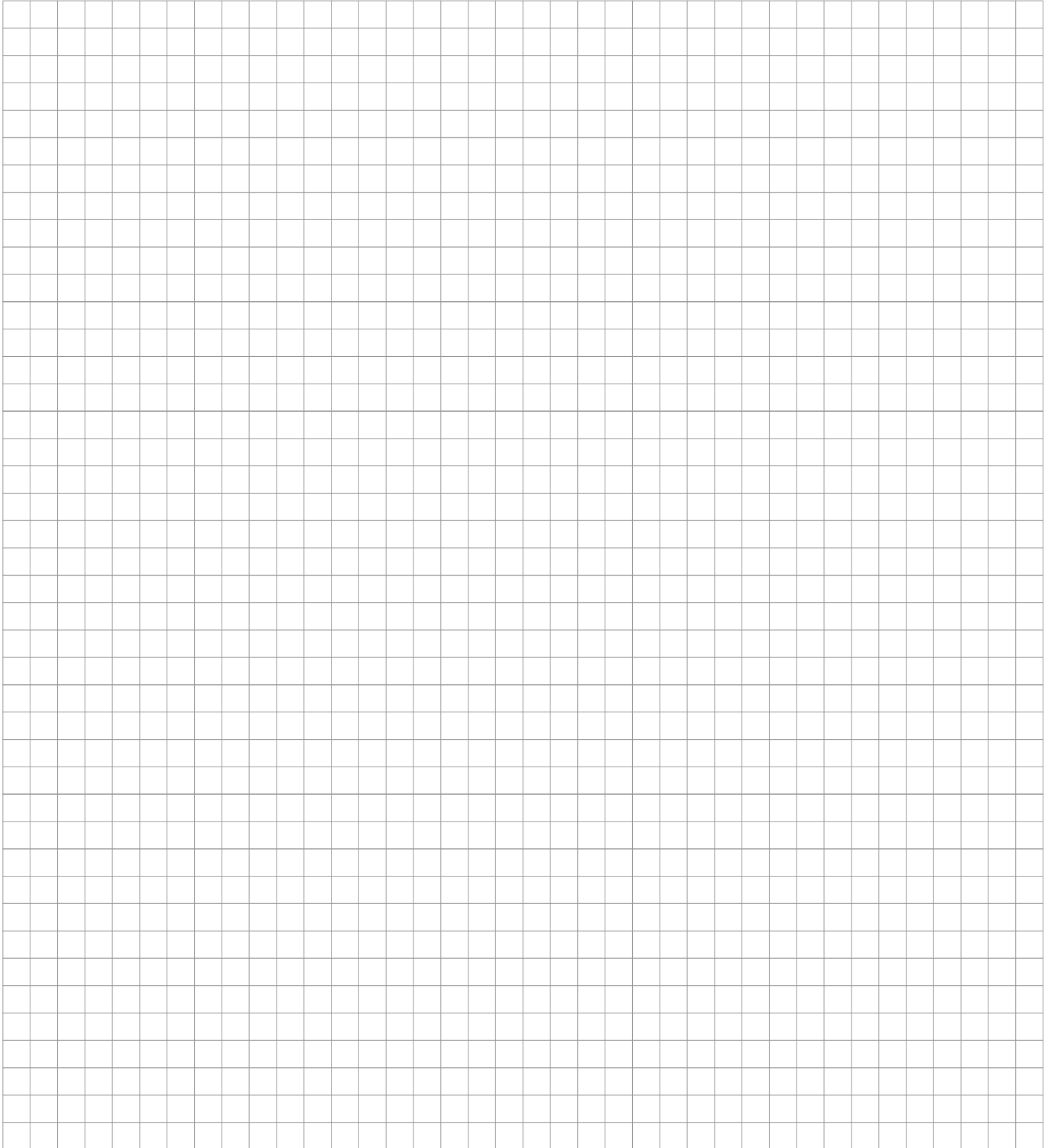
S

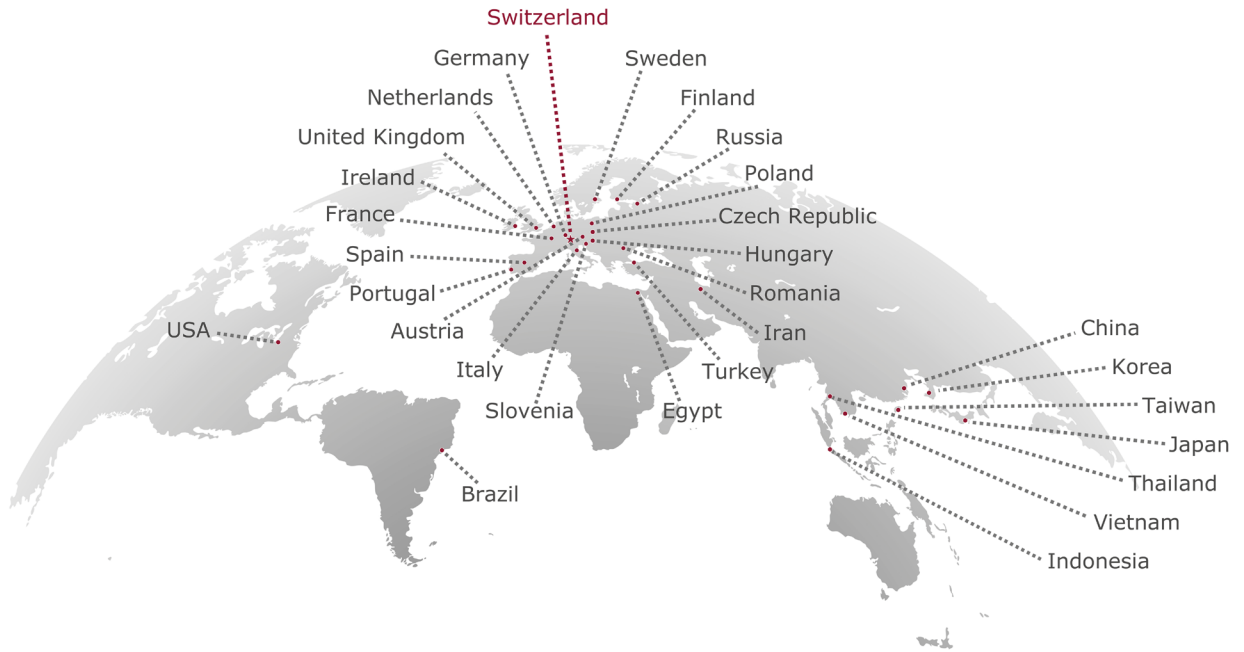
Security improved during login 13

Support for PDF 2.0 standard 12

Support for very long URLs 19







www.star-group.net

Your single-source partner for corporate product communication